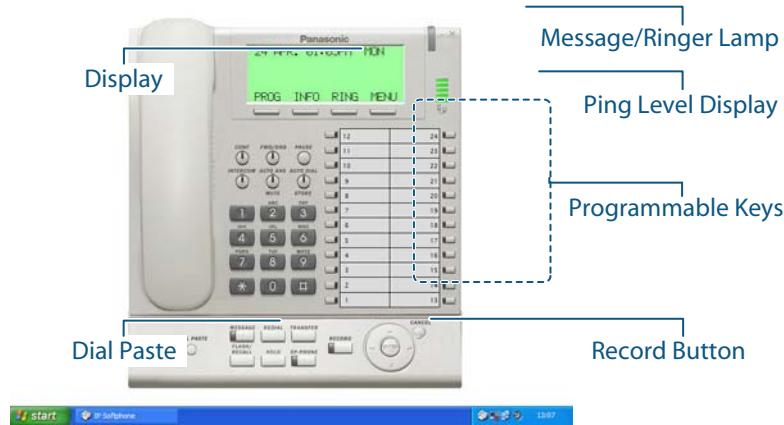


The Panasonic KX-NCS8100 IP softphone allows road warriors, sales and support staff, or any other power user to use their PC as a powerful IP softphone for access to anytime, anywhere enterprise VoIP telephony.



One-Touch Record Button

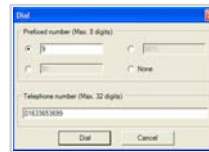


Record conversations directly onto your PC or network storage devices, minimising the need for a separate voicemail. The sound file can be emailed - if required. This function can also be applied to call centres where recording for security and training purposes are

essential.

* Enhanced feature. Requires a second licence.

Dial Paste



Simply copy telephone numbers from Microsoft Outlook, Excel, or any other software application and paste them into IP Softphone for quick and easy dialling.

* Enhanced feature. Requires a second licence.

24-Character Display



The six-line 24-character display switches to show either the caller's name or telephone number* keeping you better informed when answering customer calls. It also shows the date and time, call log, call duration, and other useful information.

* To see the caller's name - the name and number must be registered in the PBX.
To see the caller's number - subscription to Caller ID service is required.

Programmable Keys

12 Alan	Security 24
11 Lucy	Sales 23
10 Emma	Accounts 22
9 Bob	Technic... 21
8 Grp PWD	Market... 20
7 Transfer	Main Of... 19
6 Hold	Boardro... 18
5 DND	Call Pa... 17
4 Line 4	Call Pa... 16
3 Line 3	Call Pa... 15
2 Line 2	Call Pa... 14
1 Line 1	Call Pa... 13

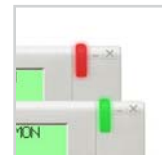
The twenty four (24) programmable keys can be assigned various PBX functions such as Call Park, Call Pick-up, and many more. Each key has a dual-colour display that shows the line status, extension status, and other related information. The key-labels can be easily edited via PC keyboard to visually display the name of the person or feature that is associated with that key.

Ping Level Display



Displays the IP Network Status between the IP Softphone and the PBX to provide network performance visual indication to user.

Message / Ringer Lamp



A large virtual dual-colour lamp - illuminates green to indicate when a call comes in and lights up as red to indicate when someone has left a message - allowing for intuitive operation.

Licensing

The NCS8100 IP softphone application can be run in three modes:

- Free mode - All features are available for 60 days.
- Standard mode - Excludes call recording and dial paste. Requires one licence per user.
- Enhanced mode - All features are available. Requires two licences per user.

System Requirements

	Minimum	Recommended
Operating System	Windows 2000/SP4	Windows XP/SP2
CPU	Pentium M 900MHz	Pentium M 1.86GHz (or higher)
RAM	256 MB Minimum	512 MB (or higher)
Hard Drive disk space	50MB Minimum (Installation)	250MB (or higher)
LAN (Ethernet)	10 Base-T	100 Base-T (or higher)
Display	XGA 1024 x 768	
Broadband	Business grade xDSL (recommended for remote users)	
Firewall	Tested with: XP SP2 Firewall, Zone Alarm v6.5, Norton Personal Firewall v2006, McAfee Personal Firewall v7.0, Sygate v5.6	
VPN	Tested over standard hardware based IPsec VPN	
Bandwidth	Fixed 100KB per call	
Peripheral Devices	Sound Card, Speaker, Microphone, CD-ROM drive	
PBX	KX-TDA100/200 PMPR software file version 3.0 or later KX-TDA600 PLMPR software file version 2.2 or later	
IP extension card	Part Number: KX-TDA0470 with latest firmware	
CODEC	G.711 (20msec packetisation)	

Specifications

	KX-NCS8100		KX-NCS8100
Alphanumeric Display (Lines x Characters)	6 x 24	Intercom	✓
Feature Access Keys for Display	4	Message	✓
Programmable CO Keys	24	Pause	✓
Direct Station Selection (DSS) Keys with Busy Lamp Field (BLF)	✓(*1)	Answer Key	✓(*1)
Navigator Key	✓	Release Key	✓(*1)
Message / Ringer Lamp	✓	Auto Answer/Mute	✓
Call Forward/Do Not Disturb	✓	Record (Enhanced feature)	✓
Redial	✓(*2)	Speakerphone	✓
Flash / Recall	✓	Off Hook Monitor	✓
Hold	✓	SP-Phone (Monitor) Volume Control	12 Levels
Auto Dial (System Speed Dialling)	✓	Handset Volume Control	4 Levels
Transfer	✓	Ringer Volume Control	4 Levels
Conference	✓	Paging Receive	✓
		Station Speed Dial	100 Numbers

(*1) Can assign to Programmable CO Keys. (*2) Automatic Redial is only available for ISDN lines